

ESSEN CAT. No. : 2MV25I2F

1			
ISS.	DATE	MODIFICATION	SIGN.

TOLERANCES  
UNLESS  
OTHERWISE  
SPECIFIED  
 $\pm 0.1$

FRAME ASSY. P1, P2, P3  
FOR MICROSWITCH 2MV25  
MOMENTARY ACTION ACTUATOR

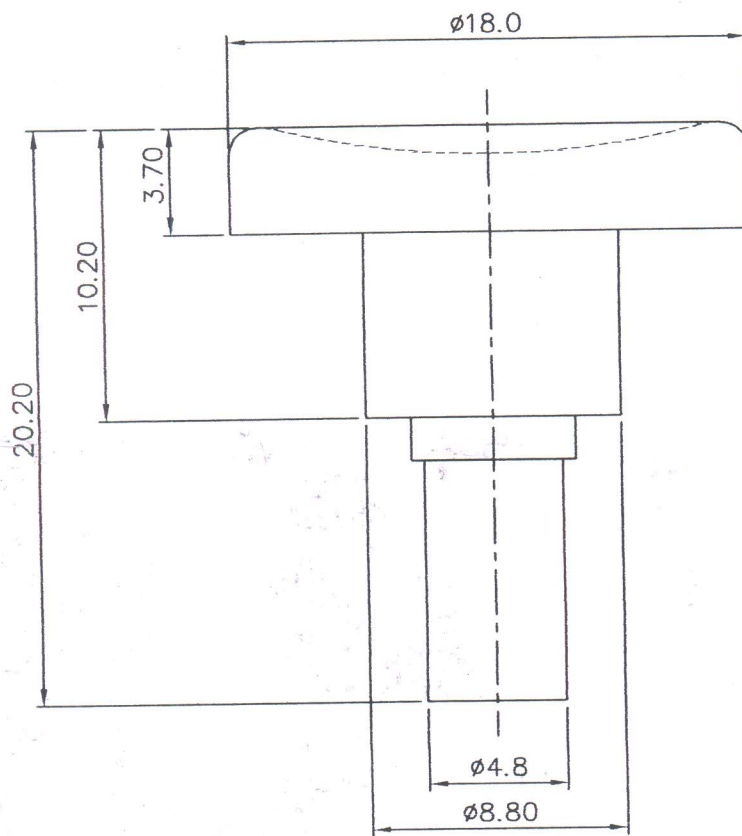
DIMENSIONS IN MM		
	DATE	SIGN.
DESIGN	10.05.13	
DRAWN	10.05.13	
CHKD.		
APPD.		

SCALE 1:1



ESSEN DEINKI,  
22, INDUSTRIAL AREA, PHASE II,  
CHANDIGARH - 160 002.

DRG. NO.  
MV25CU-088. A4.  
SHEET 1 OF 1



MATERIAL : NYLON

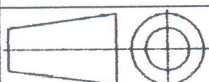
'*	COLOUR	CAT. No.	
G	GREEN	P3G	
W	WHITE	P3W	
R	RED	P3R	
B	BLACK	P3B	
Y	YELLOW	P3Y	
BL	BLUE	P3BL	

CAA\productscan\DEREK...MV25CU DRGS

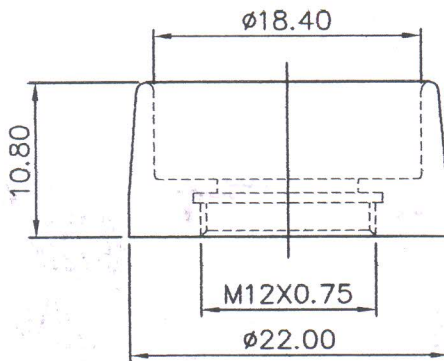
ISS.	DATE	MODIFICATION	SIGN.
1			

TOLERANCES UNLESS OTHERWISE SPECIFIED  ±0.1	<b>BUTTON (P3)</b> FOR MICROSWITCH MV25--F (WITH FRAME)		DIMENSIONS IN MM	
				DATE
			DESIGN	12.07.10
			DRAWN	12.07.10
			CHKD.	
			APPD.	
			DRG. NO.	
			MV25CU-017.	A4.
			SHEET	1 OF 1

SCALE 1:1



ESSEN DEINKI,  
22, INDUSTRIAL AREA, PHASE II,  
CHANDIGARH - 160 002.



CAT. No.	MATERIAL	FINISH
PB3MN	BRASS	NICKEL PLATING
PB3MC	BRASS	CHROME PLATING
PB3N	THERMO PLASTIC	NICKEL PLATING
PB3C	THERMO PLASTIC	CHROME PLATING
PB3	THERMO PLASTIC	NATURAL (BLACK)

ISS.	DATE	MODIFICATION	SIGN.
2	18.01.11	ADDED PB3 (BLACK)	<i>[Signature]</i>
1			

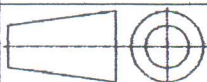
TOLERANCES  
UNLESS  
OTHERWISE  
SPECIFIED  
 $\pm 0.1$

BEZEL (PB3)  
FOR MICROSWITCH MV25--F  
(WITH FRAME)

DIMENSIONS IN MM

	DATE	SIGN.
DESIGN	12.07.10	
DRAWN	12.07.10	
CHKD.		<i>[Signature]</i>
APPD.		

SCALE 1:1



ESSEN DEINKI,  
22, INDUSTRIAL AREA, PHASE II,  
CHANDIGARH - 160 002.

DRG. NO.  
MV25CU-018. A4.  
SHEET 1 OF 1